

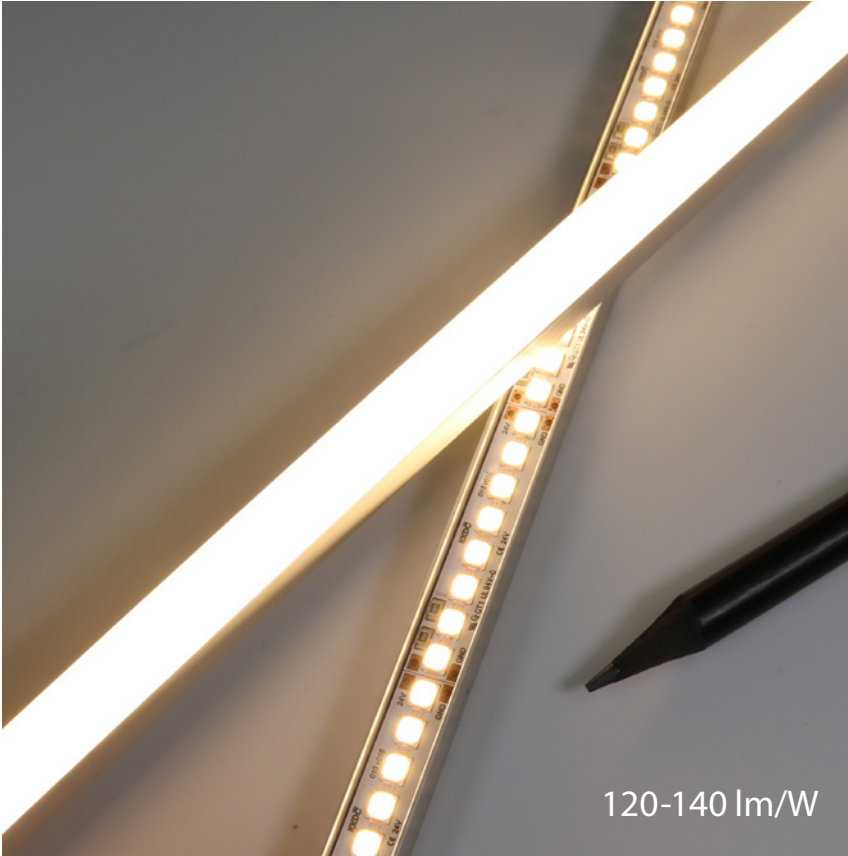
Linear

TIMI A010 (10W)

Fixture Guide

KKDC

Indoor | Surface | Output up to 1400lm/m (426lm/ft)

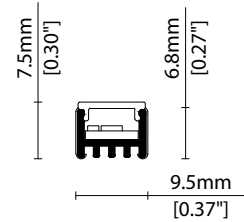


Key applications

- ✓ Architectural detail
- ✓ Backlighting & signage
- ✓ Cabinet & furniture
- ✓ Cove lighting
- ✓ Display case
- ✓ Indirect lighting
- ✓ Interior
- ✓ Mirror back lighting
- ✓ Retail display
- ✓ Shelving display

Key features

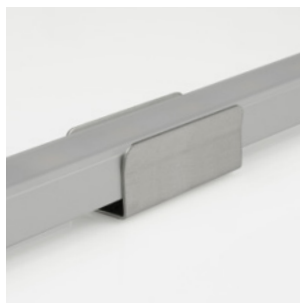
- ✓ A-line (High Efficacy)
- ✓ Custom lengths
- ✓ Cutable (IP20)
- ✓ Constant Voltage (CV)
- ✓ Diffusion: homogenous
- ✓ High lumen efficacy
- ✓ IP20 dry area
- ✓ Light on time (10 day delivery)
- ✓ Lens options



MOUNTING METHODS



KKCP-13 Lock clip



KKCP-01 Standard clip



KKCP-05 Lens lock clip



Inside lens accessory

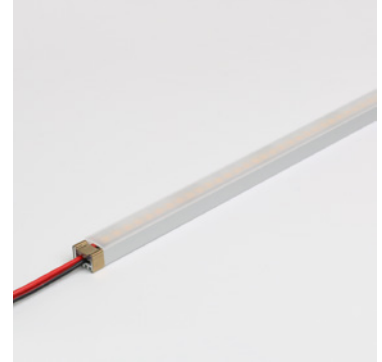
Linear

TIMI A010 (10W)

Specification sheet



Dimensions	H6.8/W9.5/L91-2014mm (H0.27/W0.37/L3.58-79.29in) (Double tail) / H6.8/W9.5/L84-2007mm (H0.27/W0.37/L3.3-79.01in) (Single tail)
PCB Cut-point	38.46mm increment/2000mm max (1.51in increment/78.74in max)
LED Pitch	4.8mm - 208LED/m (0.19in - 64LED/ft)
Chip	A-line
Cover/Optics	No Cover (120°) / Semi-diffused (100°) / KKLN-01 lens (14° or 36°)
CCT	A-line: 2700K/3000K/4000K
LED binning	A-line: 3-step MacAdam ellipse
CRI	≥94
Lifetime	50,000 hours @ 25°C (50,000 hours @ 77°F)
Operating temp	T _a = -25 to 50°C (T _c max = 75°C) T _a = -13 to 122°F (T _c max = 167°F)
IP Rating	IP20
Finish	Silver anodised
Mounting	Surface mounting via clips
Power feed	Hardwire tails or male/female connectors
Control	0-10V/1-10V/DMX/DALI



LED Grading Key

Exclusive Grade *KKDC tuned CCT range
A-line* 3-step CCT range
 KKDC highest lumen efficacy LED

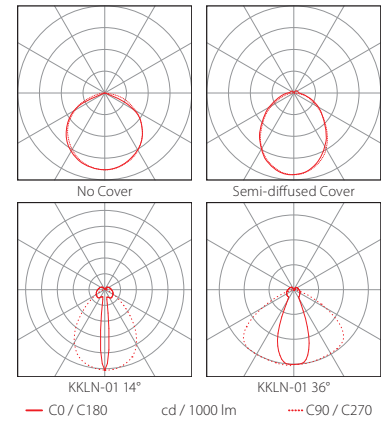
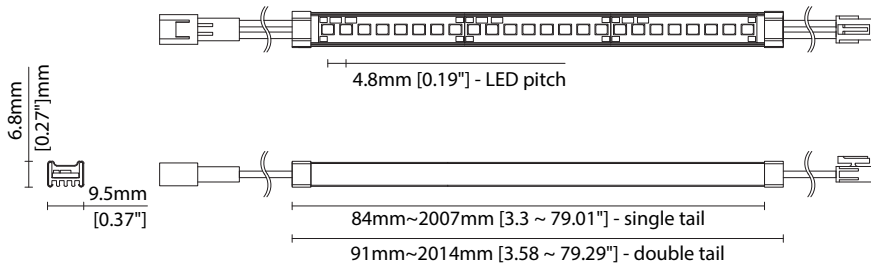
Power consumption	Supply voltage	Supply current
10W/m (3.05W/ft)	24V DC	0.42A/m (0.13A/ft)

Performance Data (3000K)

	R1	R2	R3	R4	R5	R6	R7	R8	R9	R10	R11	R12	R13	R14
A-line	94	98	99	92	93	97	91	82	62	94	93	77	95	99

	No Cover	Semi-diffused	14° (KKLN-01)	36° (KKLN-01)	CRI	R9	Rf	Rg
A-line	1400lm/m (426lm/ft) 140lm/w	1200lm/m (365lm/ft) 120lm/w	1232lm/m (376lm/ft) 123lm/w	1300lm/m (396lm/ft) 130lm/w	94	62	-	-

Male/Female connector



Data derived from independent UKAS/IESNA LM-79-08 accredited testing of production samples.

TIMI A010 (10W)

Code Table



FIXTURE

Model	Finish	Cover/Lens ¹	Grade ²	LED	Colour (CCT)	Length Availability ³	IP	Cable Length	Power Feed ⁴	Input		
TIMI	TI	Silver Anodised SA	No cover ⁵ X Semi-diffused ⁵ D KKLN-01D (14°) ⁵ S KKLN-01U (36°) ⁵ R	A A	A010 010	2700K 27 3000K 30 4000K 40	m i	91-2014mm ⁶ 84-2007mm ⁷ 38.46mm increments 3.58-79.29in ⁶ 3.3-79.0in ⁷ 1.51in increments (Specify length code OR total run length)	IP20 20	50mm (1.97in) 0050 300mm (11.81in) 0300	Single no sheath tail S00X Double no sheath tail D00X Single no sheath IP20 connector S20X Double no sheath IP20 connector D20X	DC 24V g

¹ Refer to **Cover/Lens Options** on **Options** pages

² Refer to **LED Grading Key** on **Specification sheet** page

³ Refer to **Length Availability List** or enter total run length instead of length code

⁴ Refer to **Power Feed Options** on **Options** pages

⁵ Operating temperatures vary for TIMI with cover and TIMI without cover, please check with a KKDC engineer if operating temperature is limiting product application

⁶ Double clamp TIMI length

⁷ Single clamp TIMI length

Code Example:

TI	-	SA	-	D	-	A	-	010	-	30	-	m	514	-	20	-	0050	-	D20X	-	g
TIMI		Silver Anodised		Semi-diffused		A		A010		3000K		514.4mm		IP20		50mm (1.97in)		Double no sheath IP20 connector		DC 24V	

ACCESSORIES

Mounting Accessories

KKCP-01	Clip (1no.)
KKCP-51	Clip (500no.)
KKCP-13	Lock Clip
KKCP-05	Lens Lock Clip for KKLN-01 (1no.)
KKCP-55	Lens Lock Clip for KKLN-01 (500no.)

* Refer to **Mounting accessories** on **Accessories** pages

Connection Accessories

KKCN-01	2 PIN male & female 50mm (1.97in) pair
KKCN-03	2 PIN male & female 300mm (11.81in) pair
KKCN-06	2 PIN 300mm (11.81in) extension lead

* Refer to **Power feed** on **Accessories** pages

PSU/Driver

0-10V/1-10V/DALI/DMX

* Refer to **Driver/PSU Options** page for details or provide requirement and KKDC to offer the suitable option

LED ENGINE VARIANTS (LED STRIP TYPE)

Colour	LED	Lumen/m	Lumen/ft	W/m	W/ft	Spec Doc	Length	Increment
Single CCT	R007	680	207	7	2.13	TIMI R007	97-2014mm (3.81-79.29in)	41.7mm (1.64in)
	R014	1380	421	14	4.27	TIMI R014	97-2014mm (3.81-79.29in)	41.7mm (1.64in)
	A010	1400	426	10	3.05	TIMI A010	91-2014mm (3.58-79.29in)	38.46mm (1.51in)
Warm Dim/Dynamic White	A020	2800	853	20	6.10	TIMI A020	91-2014mm (3.58-79.29in)	38.46mm (1.51in)
	R207	1476	450	16	4.88	TIMI R207	97-2014mm (3.81-79.29in)	83.3mm (3.28in)
RGB	501	Red 150 Green 320 Blue 50 RGB 460	Red 46 Green 98 Blue 15 RGB 140	16	4.88	TIMI RGB	97-2014mm (3.81-79.29in)	83.3mm (3.28in)

* Performance data: A/s-line, no cover, 3000K

Linear

TIMI A010 (10W)

Length Availability List



Length Code		Fixture Length ¹		LED Strip ²		End Cap Dimension		Wattage (W)	Output (lm)
Metric	Imperial(US)	Metric	Imperial(US)	Metric	Imperial(US)	Metric	Imperial(US)		3000K (Test Data)
m0091	i0004	91mm	3.58in	77mm	3.03in	N/A	N/A	0.77	108
m0129	i0005	129mm	5.09in	115mm	4.54in	N/A	N/A	1.15	162
m0168	i0007	168mm	6.61in	154mm	6.06in	N/A	N/A	1.54	215
m0206	i0008	206mm	8.12in	192mm	7.57in	N/A	N/A	1.92	269
m0245	i0010	245mm	9.64in	231mm	9.09in	N/A	N/A	2.31	323
m0283	i0011	283mm	11.15in	269mm	10.60in	N/A	N/A	2.69	377
m0322	i0013	322mm	12.67in	308mm	12.11in	N/A	N/A	3.08	431
m0360	i0014	360mm	14.18in	346mm	13.63in	N/A	N/A	3.46	485
m0399	i0016	399mm	15.69in	385mm	15.14in	N/A	N/A	3.85	538
m0437	i0017	437mm	17.21in	423mm	16.66in	N/A	N/A	4.23	592
m0476	i0019	476mm	18.72in	462mm	18.17in	N/A	N/A	4.62	646
m0514	i0020	514mm	20.24in	500mm	19.69in	N/A	N/A	5.00	700
m0552	i0022	552mm	21.75in	538mm	21.20in	N/A	N/A	5.38	754
m0591	i0023	591mm	23.26in	577mm	22.71in	N/A	N/A	5.77	808
m0629	i0025	629mm	24.78in	615mm	24.23in	N/A	N/A	6.15	862
m0668	i0026	668mm	26.29in	654mm	25.74in	N/A	N/A	6.54	915
m0706	i0028	706mm	27.81in	692mm	27.26in	N/A	N/A	6.92	969
m0745	i0029	745mm	29.32in	731mm	28.77in	N/A	N/A	7.31	1023
m0783	i0031	783mm	30.84in	769mm	30.28in	N/A	N/A	7.69	1077
m0822	i0032	822mm	32.35in	808mm	31.80in	N/A	N/A	8.08	1131
m0860	i0034	860mm	33.86in	846mm	33.31in	N/A	N/A	8.46	1185
m0899	i0035	899mm	35.38in	885mm	34.83in	N/A	N/A	8.85	1238
m0937	i0037	937mm	36.89in	923mm	36.34in	N/A	N/A	9.23	1292
m0976	i0038	976mm	38.41in	962mm	37.86in	N/A	N/A	9.62	1346
m1014	i0040	1014mm	39.92in	1000mm	39.37in	N/A	N/A	10.00	1400
m1052	i0041	1052mm	41.44in	1038mm	40.88in	N/A	N/A	10.38	1454
m1091	i0043	1091mm	42.95in	1077mm	42.40in	N/A	N/A	10.77	1508
m1129	i0044	1129mm	44.46in	1115mm	43.91in	N/A	N/A	11.15	1562
m1168	i0046	1168mm	45.98in	1154mm	45.43in	N/A	N/A	11.54	1615
m1206	i0047	1206mm	47.49in	1192mm	46.94in	N/A	N/A	11.92	1669
m1245	i0049	1245mm	49.01in	1231mm	48.46in	N/A	N/A	12.31	1723
m1283	i0051	1283mm	50.52in	1269mm	49.97in	N/A	N/A	12.69	1777
m1322	i0052	1322mm	52.04in	1308mm	51.48in	N/A	N/A	13.08	1831
m1360	i0054	1360mm	53.55in	1346mm	53.00in	N/A	N/A	13.46	1885
m1399	i0055	1399mm	55.06in	1385mm	54.51in	N/A	N/A	13.85	1938
m1437	i0057	1437mm	56.58in	1423mm	56.03in	N/A	N/A	14.23	1992
m1476	i0058	1476mm	58.09in	1462mm	57.54in	N/A	N/A	14.62	2046
m1514	i0060	1514mm	59.61in	1500mm	59.06in	N/A	N/A	15.00	2100
m1552	i0061	1552mm	61.12in	1538mm	60.57in	N/A	N/A	15.38	2154
m1591	i0063	1591mm	62.63in	1577mm	62.08in	N/A	N/A	15.77	2208
m1629	i0064	1629mm	64.15in	1615mm	63.60in	N/A	N/A	16.15	2262
m1668	i0066	1668mm	65.66in	1654mm	65.11in	N/A	N/A	16.54	2315
m1706	i0067	1706mm	67.18in	1692mm	66.63in	N/A	N/A	16.92	2369

Linear

TIMI A010 (10W)

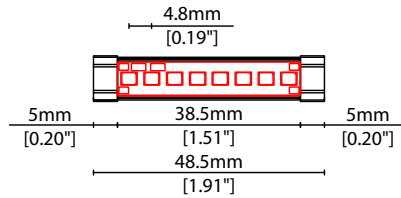
Length Availability List



Length Code		Fixture Length ¹		LED Strip ²		End Cap Dimension		Wattage (W)	Output (lm)
Metric	Imperial(US)	Metric	Imperial(US)	Metric	Imperial(US)	Metric	Imperial(US)		3000K (Test Data)
m1745	i0069	1745mm	68.69in	1731mm	68.14in	N/A	N/A	17.31	2423
m1783	i0070	1783mm	70.21in	1769mm	69.65in	N/A	N/A	17.69	2477
m1822	i0072	1822mm	71.72in	1808mm	71.17in	N/A	N/A	18.08	2531
m1860	i0073	1860mm	73.23in	1846mm	72.68in	N/A	N/A	18.46	2585
m1899	i0075	1899mm	74.75in	1885mm	74.20in	N/A	N/A	18.85	2638
m1937	i0076	1937mm	76.26in	1923mm	75.71in	N/A	N/A	19.23	2692
m1976	i0078	1976mm	77.78in	1962mm	77.23in	N/A	N/A	19.62	2746
m2014	i0079	2014mm	79.29in	2000mm	78.74in	N/A	N/A	20.00	2800

¹ Actual total overall length of light fixture (LED strip + end caps + void/wire hole)

² Actual length of PCB strip



Linear

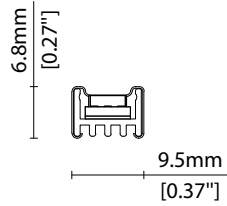
TIMI A010 (10W)

Options

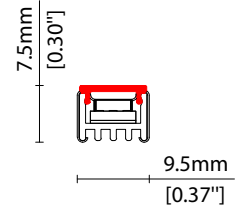
KKDC

COVER/LENS OPTIONS

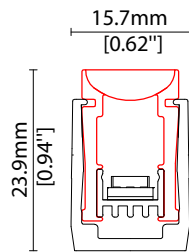
* Options are an integral part of the fixture ordering codes. Please refer to **Code Table** pages.



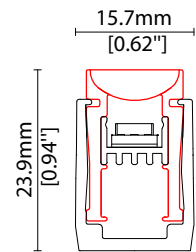
X No cover
W9.5/H6.8mm (W0.37/H0.27")



D Semi-diffused cover
Polycarbonate finish
W9.5/H7.5mm (W0.37/H0.30")



S 14° lens (KKLN-01D)
14° beam linear lens,
co-extruded PMMA
W12.8/H20mm (W0.5/H0.79")

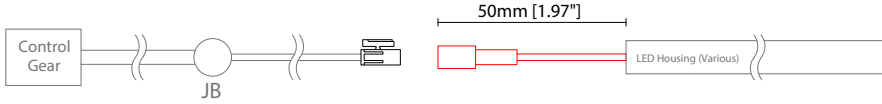


R 36° lens (KKLN-01U)
36° beam linear lens,
co-extruded PMMA
W12.8/H20.4mm (W0.5/H0.8")

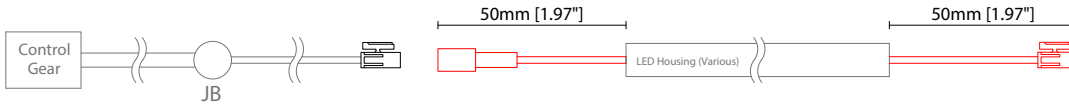
POWER FEED OPTIONS

* Options are an integral part of the fixture ordering codes. Please refer to **Code Table** pages.

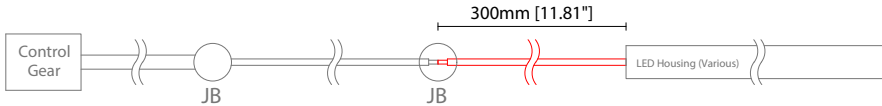
0050 S20X 50mm (1.97") Single no sheath IP20 connector



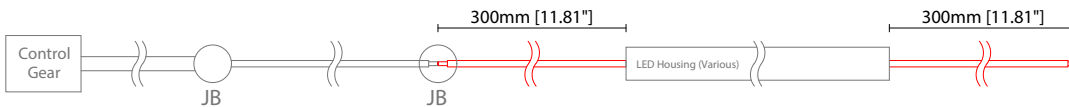
0050 D20X 50mm (1.97") Double no sheath IP20 connector



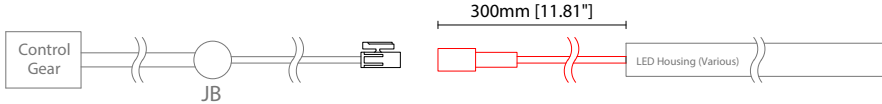
0300 S00X 300mm (11.81") Single no sheath tail



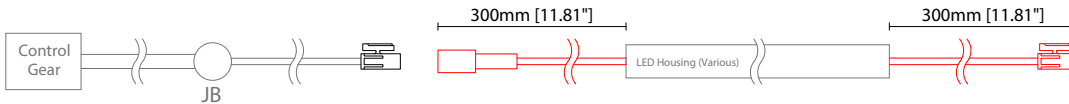
0300 D00X 300mm (11.81") Double no sheath tail



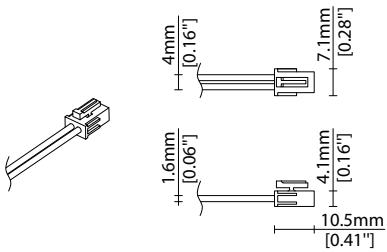
0300 S20X 300mm (11.81") Single no sheath IP20 connector



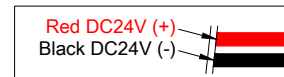
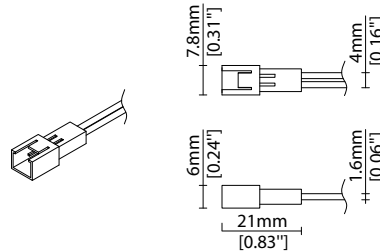
0300 D20X 300mm (11.81") Double no sheath IP20 connector



2 Pin Female Connector



2 Pin Male Connector



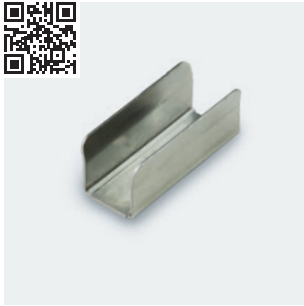
Key

Control Gear Power supply, sub-controllers & control systems

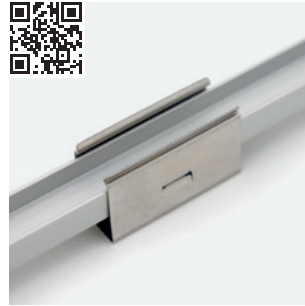
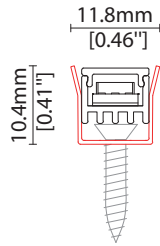
JB Junction box / cable connection

MOUNTING ACCESSORIES

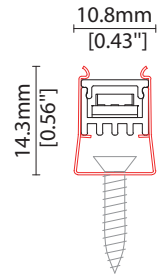
Note: Accessories are to be ordered separately with corresponding code shown below.



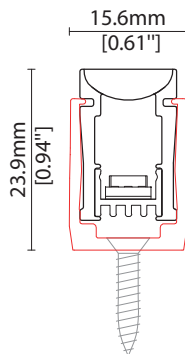
KKCP-01 (1no.)
 KKCP-51 (500no.)
 Clip (allow 3 per metre/40in)
 S/Steel finish
 L25/W11.8/H10.4mm
 (L0.98/W0.46/H0.41")



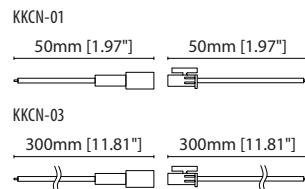
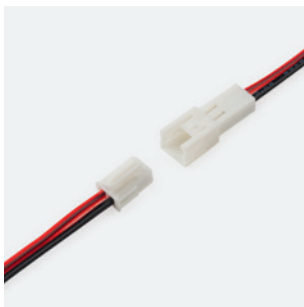
KKCP-13
 Lock clip (allow 2 per metre/40in)
 S/Steel finish
 L25/W10.8/H14.5mm
 (L0.98/W0.43/H0.57")



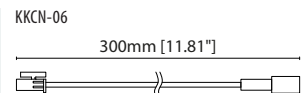
KKCP-05 (1no.)
 KKCP-55 (500no.)
For use with KKLN-01 lens only
 Lens lock clip (allow 3 per metre/40in)
 Clear polycarbonate finish
 L25/W15.6/H24mm
 (L0.98/W0.61/H0.94")



POWER FEED



KKCN-01 50mm (1.97in) pair
 KKCN-03 300mm (11.81in) pair
 2 PIN male + female connector set



KKCN-06
 2 PIN 300mm (11.81in) extension lead

Linear

TIMI A010 (10W)

Accessories

KKDC

KKDC CONTROL



IP20
Plastic housing
L170/W59/H29mm
(L6.69/W2.32/H1.14in)

KKDM-06 1-10V

visDIM dimmable sub-controller
(4 x 8A max @ 12-36V)



IP20
Plastic housing
L170/W53.4/H28mm
(L6.69/W2.10/H1.10in)

KKSC-05 DMX

visDIM dimmable sub-controller
(4 x 5A max @ 12-36V)



IP20
Plastic housing
L170/W59/H29mm
(L6.69/W2.32/H1.14in)

KKDL-02 DALI

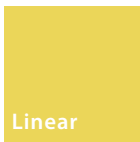
visDIM dimmable sub-controller
(4 x 8A max @ 12-36V)



IP20
Plastic housing
L166/W53.4/H23mm
(L6.54/W2.10/H0.91in)

KKDL-03 DALI

visDIM dimmable sub-controller
(4 x 5A max @ 12-36V)



TIMI

Driver/PSU Options



AVAILABLE PSU OPTIONS

Control Mode	PSU (Order Code)	Input Voltage AC	Output Voltage DC	Rated Output Current	Rated Power	Dim %	IP Rating
Switched	CEN-60-24	90-295V	24V	2.5A	60W	-	IP67
	HLG-60H-24	90-305V	24V	2.5A	60W	-	IP67
	HLG-100H-24	90-305V	24V	4.0A	100W	-	IP67
	HLG-150H-24	90-305V	24V	6.3A	150W	-	IP67
	HLG-240H-24	90-305V	24V	10A	240W	-	IP67
0-10V (1-10V)	PWM-40-24	90-305V	24V	1.67A	40W	100-0.15 (100-10)	IP67
	PWM-60-24	90-305V	24V	2.5A	60W	100-0.15 (100-10)	IP67
	PWM-90-24	90-305V	24V	3.67A	90W	100-0.15 (100-10)	IP67
	PWM-120-24	90-305V	24V	5.0A	120W	100-0.15 (100-10)	IP67
DALI	LIN100A1	120-277V	24V	1A per channel	100W	100-0.1	IP66/IP40
DMX RGB	LIN100A1	120-277V	24V	1.33A per channel	100W	100-0.1	IP66/IP40
DMX RGBW	LIN100A1	120-277A	24V	1A per channel	100W	100-0.1	IP66/IP40

Flicker Free Options - Combination of PSU+ sub-controller

Control Mode	PSU (Order Code)	Sub-controller (Order Code)	Input Voltage AC	Output Voltage DC	Rated Output Current	Rated Power	Dim %	IP Rating PSU/ Sub-controller
0-10V or 1-10V	CEN-60-24	KKDM-06	90-295V	24V	2.5A	60W	100-0.9	IP67/IP20
	HLG-60H-24	KKDM-06	90-295V	24V	2.5A	60W	100-0.9	IP67/IP20
	HLG-100H-24	KKDM-06	90-295V	24V	4.0A	100W	100-0.9	IP67/IP20
	HLG-150H-24	KKDM-06	90-295V	24V	6.3A	150W	100-0.9	IP67/IP20
	HLG-240H-24	KKDM-06	90-295V	24V	10.0A	240W	100-0.9	IP67/IP20
DALI	CEN-60-24	KKDL-02/03	90-295V	24V	2.5A	60W	100-0.1	IP67/IP20
	HLG-60H-24	KKDL-02/03	90-305V	24V	2.5A	60W	100-0.1	IP67/IP20
	HLG-100H-24	KKDL-02/03	90-305V	24V	4.0A	100W	100-0.1	IP67/IP20
	HLG-150H-24	KKDL-02/03	90-305V	24V	6.3A	150W	100-0.1	IP67/IP20
	HLG-240H-24	KKDL-02/03	90-305V	24V	10.0A	240W	100-0.1	IP67/IP20
DMX RGB	CEN-60-24	KKSC-05	90-295V	24V	2.5A	60W	100-0.9	IP67/IP20
	HLG-60H-24	KKSC-05	90-305V	24V	2.5A	60W	100-0.9	IP67/IP20
	HLG-100H-24	KKSC-05	90-305V	24V	4A	100W	100-0.9	IP67/IP20
	HLG-150H-24	KKSC-05	90-305V	24V	6.3A	150W	100-0.9	IP67/IP20
	HLG-240H-24	KKSC-05	90-305V	24V	10.0A	240W	100-0.9	IP67/IP20

¹ The items shown above cover the most frequently used specification but does not exhaust the possible options

² PSU and/or driver can be chosen from the table, or KKDC may recommend the best option upon receipt of the controls requirement and installation environment

³ Electrical shop drawing will include detailed information of PSU and relevant control drivers

⁴ Cut sheets are available on the controls section of www.kkdc.lighting or upon request